

akula

designed for life

MATERIALS
& FABRICS

POWDER-COATED ALUMINIUM



- Fluidised powder coating applied to the aluminium structure by electrostatic spray. To ensure the solidity and resistance of the powder coating, the whole thing is stoved at a temperature of between 160°C (320°F) and 210°C (410°F), according to the type of powder.
- For outdoor and indoor use.

Maintenance: easy to clean with water or specific alu cleaner.
Avoid the use of abrasive products and solvents.



WICKER (round cord)



- A synthetic fibre (HDPE), high quality thermoplastic fibre.
- Dyed in the mass, UV-resistant.
- Toxin-free, ecological, 100% recyclable.
- Swimming pool and sea water resistant and repellent.
- For outdoor and indoor use.
- Thickness: 2 mm.



Maintenance: easy to clean with water or specific wicker cleaner.
Avoid the use of abrasive products and solvents and high pressure cleaning.



TEAK



- Superior quality of teak wood (VINIR & HARA) aged 60 to 80 years, sourced from ecological plantations.
- Great stability under the effect of UV radiation, chlorine and sea water.
- 100% recyclable.
- For outdoor and indoor use.

Maintenance: easy to clean and maintain, various specific treatments possible.
Avoid the use of abrasive products and solvents and high pressure cleaning.



TRESPA® (HPL)



- HPL = High Pressure Laminate. Flat thermo hardening resin-based sheet, homogenously reinforced with wood-based fibres and manufactured at high pressure and temperature.
- The visible side is covered in a decorative surface using the patented EBC technology.
- For all colours the border has a black finish.
- For outdoor and indoor use.
- Thickness: 13 mm.

Maintenance: easy to clean with water or specific Trespa® cleaner.
Avoid the use of abrasive products and solvents.



GLASS (acid etched glass)



- Hardened glass, acid etched on the top, coloured on the bottom side.
- Tensile strength: intrinsic tensile strength 10,000 N/mm².
- Scratch resistant (clearly sharp objects may cause scratches on the surface of the glass).
- Thermal conductivity: 0.8W/mk.
- For outdoor and indoor use.
- Thickness: 8 mm.

Maintenance: easy to clean with water or specific glass cleaner.
Avoid the use of abrasive products and solvents.

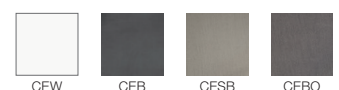
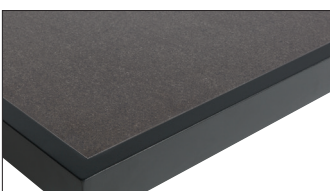


CERAMIC

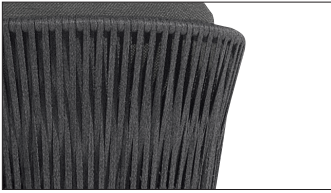


- Obtained by wet-grinding clay, granite and metamorphic rock raw materials together with a feldspar component and ceramic pigments. Specially shaped in a compactor and sintered at 1200°C, with gas firing.
- Resistant to heat, high temperatures, UV-light, humidity, mould, fungi and frost.
- Resistant to scratching and abrasion.
- Resistant to detergents and cleaning products.
- For outdoor and indoor use.
- Thickness: CEW/CEB 6 mm, CESB/CEBO 9.5 mm or 11.5 mm

Maintenance: easy to clean with water or specific ceramic cleaner.
Avoid the use of abrasive products and solvents.



ALU + ROPE



- Outside: Olefin cover. Inside filling: Polyester
- Dyed in the mass, UV-resistant.
- Mildew resistant.
- Swimming pool and sea water resistant and repellent.
- For outdoor and indoor use.
- Width: 11 mm



Maintenance: easy to clean with water or a specific mild detergent.
Avoid the use of abrasive products and solvents
and high pressure cleaning.



F10R03

F14R05

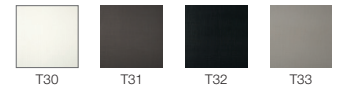


TEXTILENE®



- Polyester with PVC coating.
- Dyed in the mass, UV-resistant.
- Swimming pool and sea water resistant and repellent.
- For outdoor and indoor use.

Maintenance: easy to clean with water or specific Textilene® cleaner.
Avoid the use of abrasive products and solvents and high pressure cleaning.



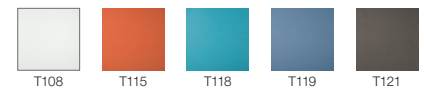
BATYLINE®



- 85% polyester/PVC compound, 15% polyurethane.
- Dyed in the mass, UV-resistant.
- Swimming pool and sea water resistant and repellent.
- For outdoor and indoor use.

Maintenance: easy to clean with water or specific Batyline® cleaner.
Avoid the use of abrasive products and solvents and high pressure cleaning.

batyline®



WATERPROOF BATYLINE®



- 17% synthetic fibres, 60% PVC, 23% PES.
- Dyed in the mass, UV-resistant.
- Laminated for resistance to water penetration.
- Swimming pool and sea water resistant and repellent.
- For outdoor and indoor use.



Maintenance: easy to clean with water or specific Batyline® cleaner.
Avoid the use of abrasive products and solvents and high pressure cleaning.

batyline®

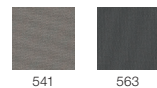


FABRIC



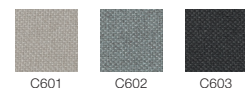
- 100% solution dyed acrylic.
- Dyed in the mass, UV-resistant.
- Swimming pool and sea water resistant and repellent.
- For outdoor and indoor use.

Maintenance: easy to clean by following the washing instructions.
Avoid the use of abrasive products and solvents.



- 100% Polyester.
- Dyed in the mass, UV-resistant.
- Swimming pool and sea water resistant and repellent.
- For outdoor and indoor use.

Maintenance: easy to clean by following the washing instructions.
Avoid the use of abrasive products and solvents.



SUNBRELLA® FABRIC



- 100% solution dyed acrylic.
- Dyed in the mass, UV-resistant.
- Swimming pool and sea water resistant and repellent.
- For outdoor and indoor use.

Maintenance: easy to clean by following the washing instructions.
Avoid the use of abrasive products and solvents.



 sunbrella®



WATERPROOF FABRIC



- 57% polypropylene, 38% polyester, 5% polyurethane.
- Dyed in the mass, UV-resistant.
- Laminated for resistance to water penetration.
- Swimming pool and sea water resistant and repellent.
- For outdoor and indoor use.



Maintenance: easy to clean by following the washing instructions.
Avoid the use of abrasive products and solvents.

